



345
CALIFORNIA

345 California

Iconic, class A mixed-use property with premier on-site amenities, spacious common areas, and flexible open floorplates designed for occupiers to create their ideal, modern office experience



Lobby

Newly renovated
Lobby and Plaza
offering touchless entry
through turnstiles



Lobby



The Room

The new Tenant Lounge provides additional opportunities for spaced collaboration or quiet reflection



Amenities

Retail amenities including illycaffè, The Bear & Monarch Restaurant and the Four Seasons Hotel San Francisco



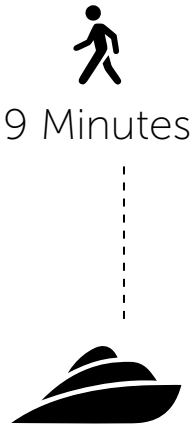


High end locker & shower facilities, towel service, and Molton Brown toiletries with high sanitization standards in place



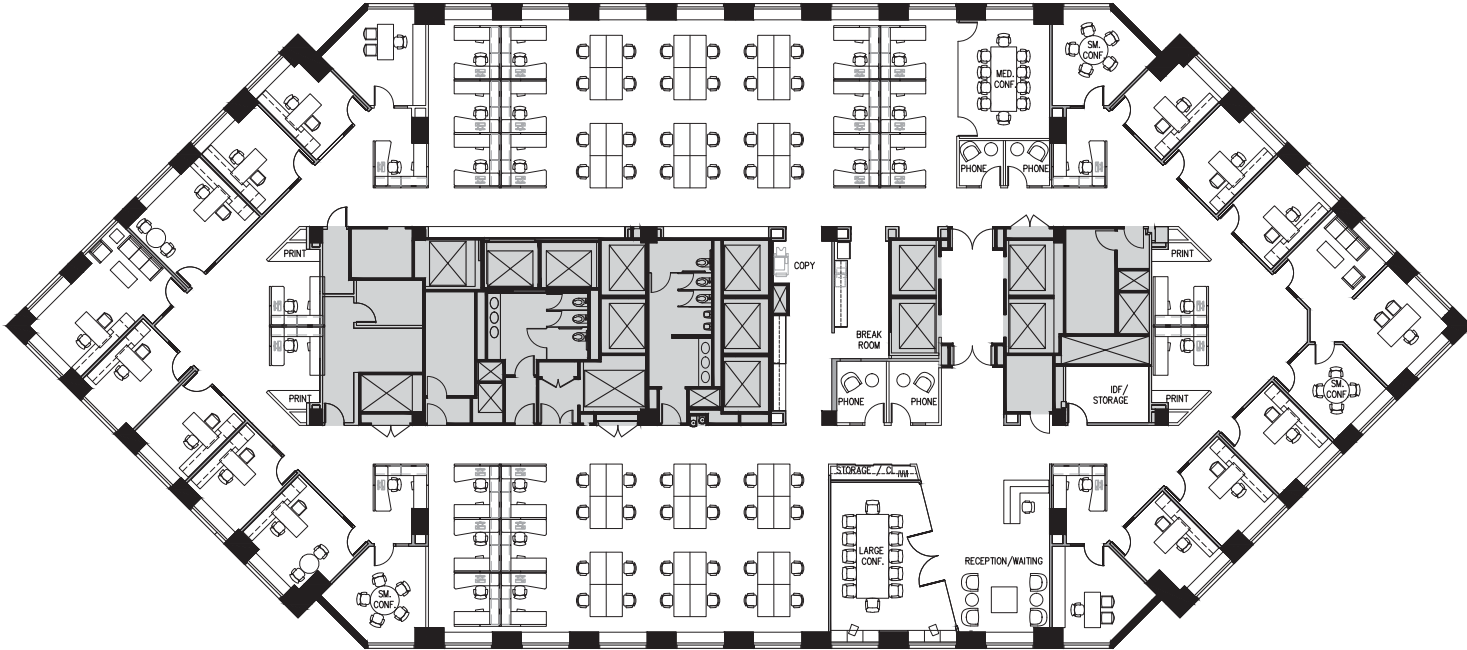
Commute to work on your bike, with access to Lockers, Fix it Station, and Bike Racks

Access



The Floor

Full Floor Hypothetical Plan



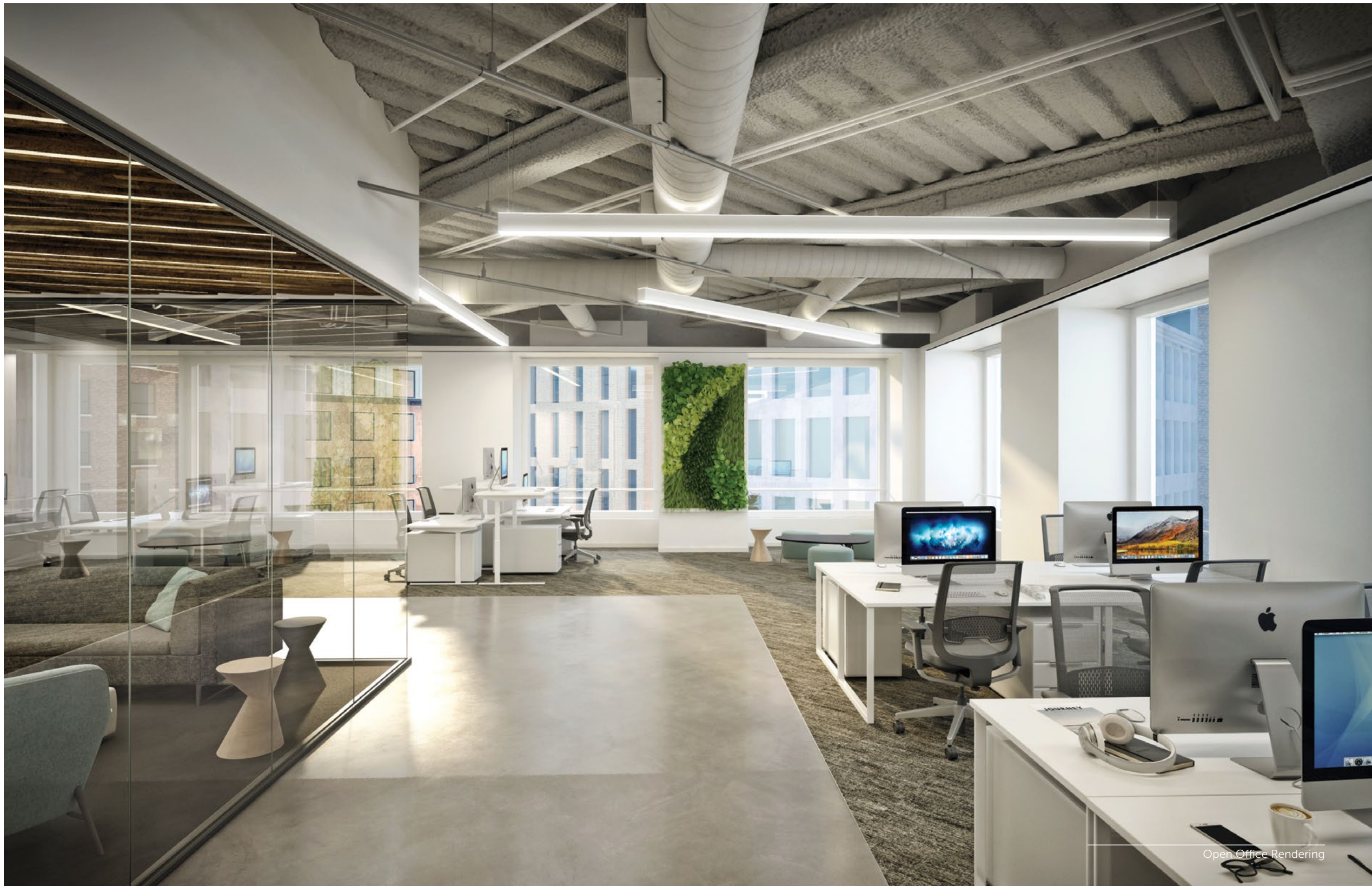
Flexible large floor plates provide a variety of office layouts



Design

Create a custom
experience for your
employees





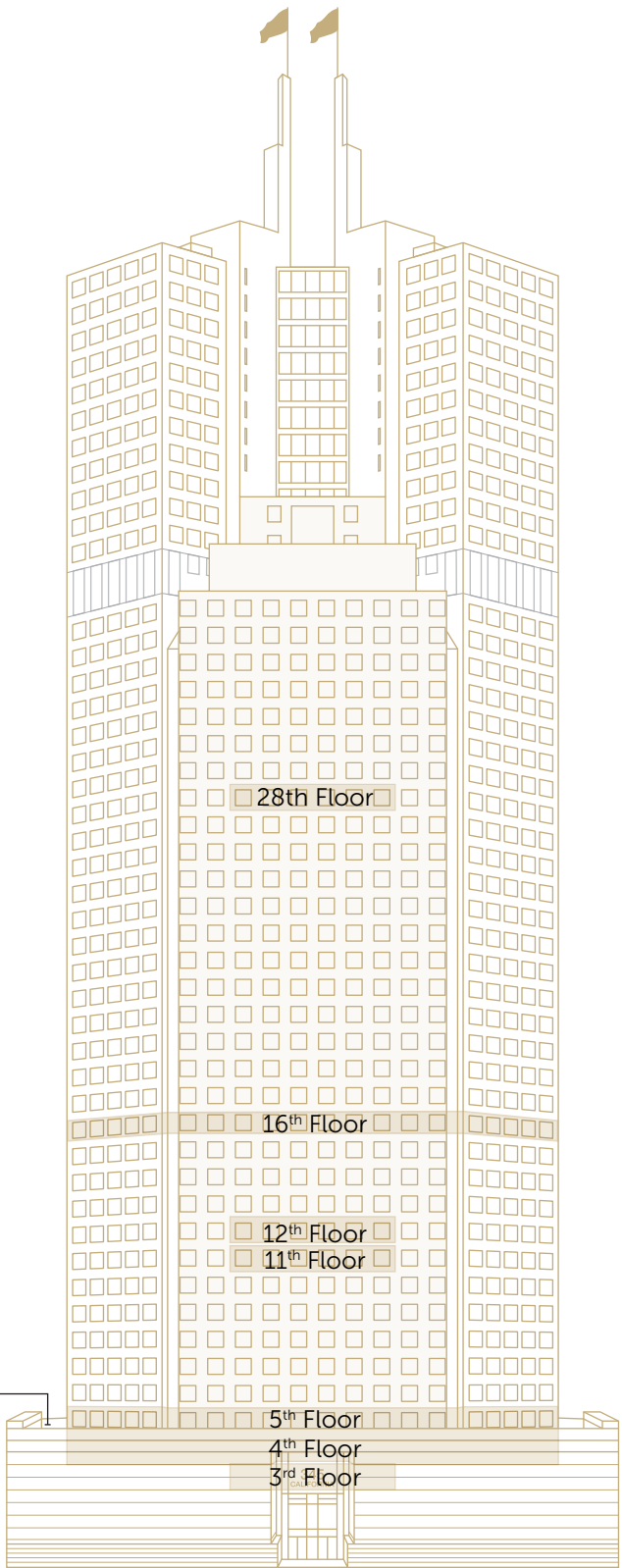
Breathe Easy

The building's HVAC systems have high efficiency MERV 13 filters and ventilation system meets ASHREA 62 standards. Experience the highest standard of healthy indoor air quality with spacious room to expand and grow.

Transform Your Environment



Availabilities



Suite 2850	7,988 RSF	Available Now
16th Floor	17,426 RSF	Available 03/1/21
Suite 1200	5,579 RSF	Available Now
Suite 1160	3,248 RSF	Available 11/1/20
5th Floor	16,970 RSF	Available Now
Suite 495	8,835 RSF	Available Now
Suite 440	1,400 RSF	Available Now
Suite 425	2,487 RSF	Available Now
Suite 350	7,088 RSF	Available 11/1/20
TOTAL	71,021 RSF	

Greg Fogg

415 773 3560

greg.fogg@cushwake.com

LIC# 01060589

Ross Robinson

415 773 3576

ross.robinson@cushwake.com

LIC# 01414104

Tim Hogan

415 694 6477

tim.hogan@cushwake.com

LIC# 01375367



METROPOLIS

