



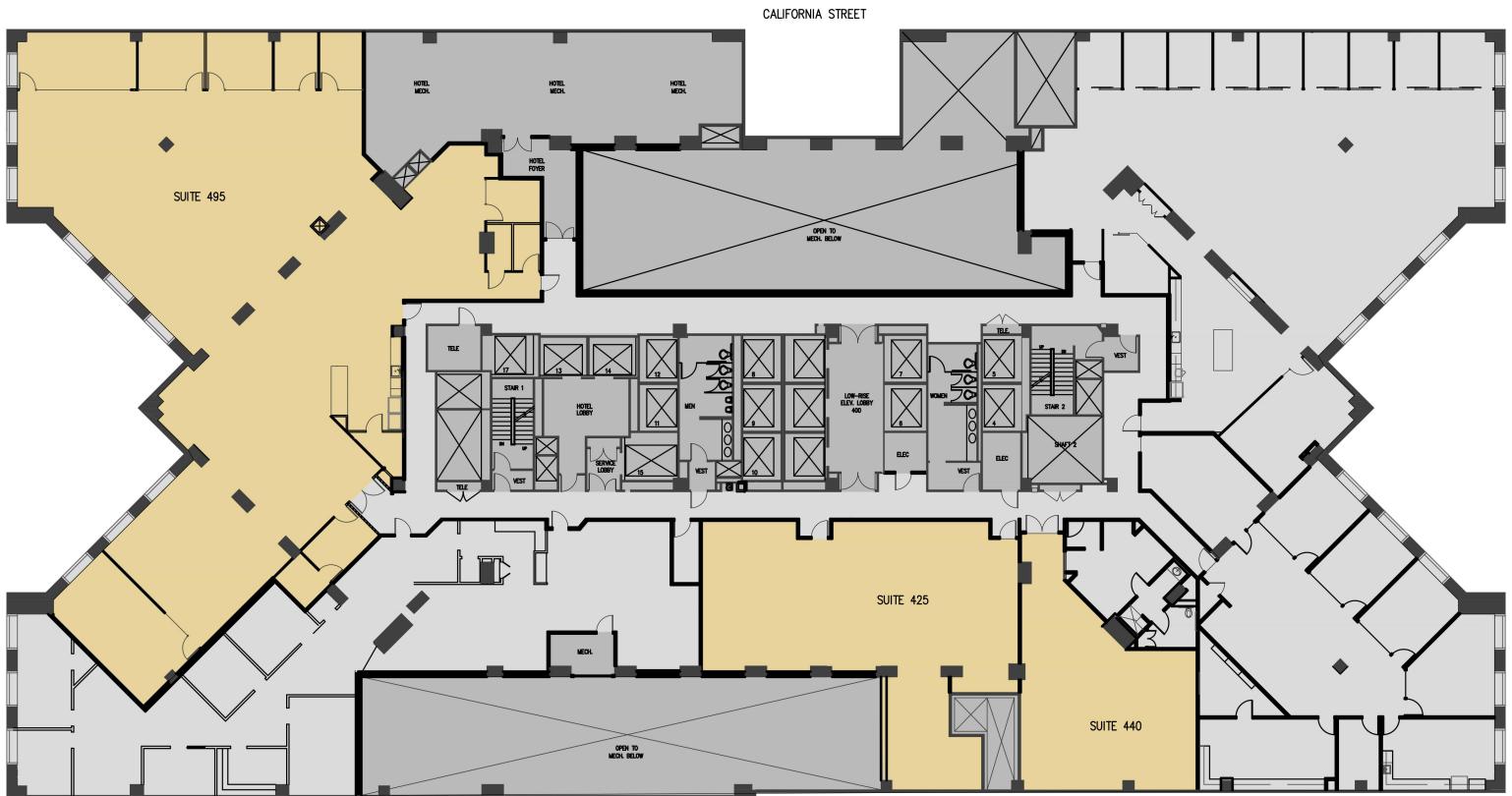
**4th Floor** | Suite 495 | 8,835 RSF

Suite 425 | 2,487 RSF

Suite 440 | 1,400 RSF

---

**Total**      **12,722 RSF**



For more information, please contact:

**Greg Fogg**  
 415 773 3560  
 greg.fogg@cushwake.com  
 LIC# 01060589

**Ross Robinson**  
 415 773 3576  
 ross.robinson@cushwake.com  
 LIC# 01414104

**Tim Hogan**  
 415 694 6477  
 tim.hogan@cushwake.com  
 LIC# 01375367



**METROPOLIS**  
 Investment Holdings Inc.